

Rates are high in Long Island Sound

nature climate change LETTERS

Hotspot of accelerated sea-level rise on the Atlantic coast of North America

Asbury H. Sallenger Jr*, Kara S. Doran and Peter A. Howd

nature COMMUNICATIONS

ARTICLE
Received 1 Aug 2014 | Accepted 21 Jan 2015 | Published 26 Feb 2015

An extreme event of sea-level rise along the Northeast coast of North America in 2009–2010

Paul B. Goddard¹, Jianqun Yin¹, Stephen M. Griffin² & Shaoping Zhang²

Coastal ecosystems are already heavily altered

Development
Hydrology (ditches, diking)
Introduced species
Pollutants (toxins, nutrients)

SHARP Saltmarsh Habitat & Avian Research Program

Co-PIs: Chris Elphick, Tom Hodgman, Brian Olsen, Greg Shriver, Adrienne Kovach, Jonathan Cohen

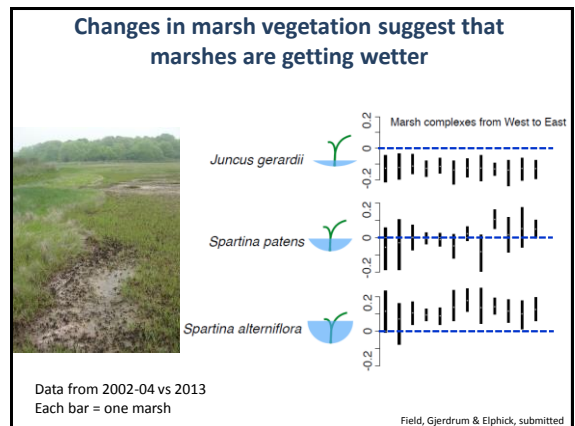
5 Universities
10 States
14 Graduate students
4 Postdocs/Staff

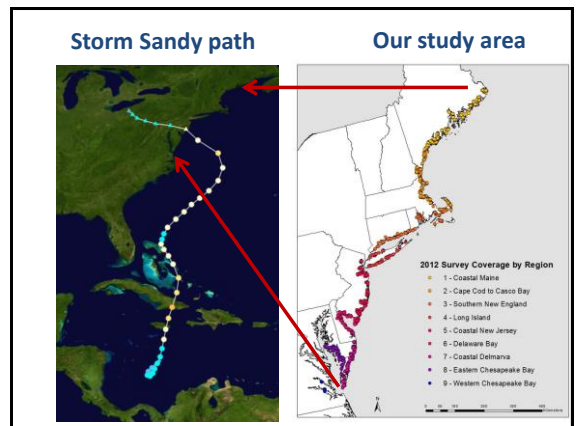
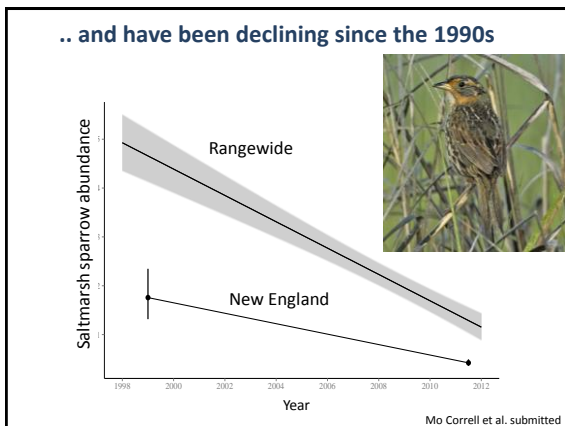
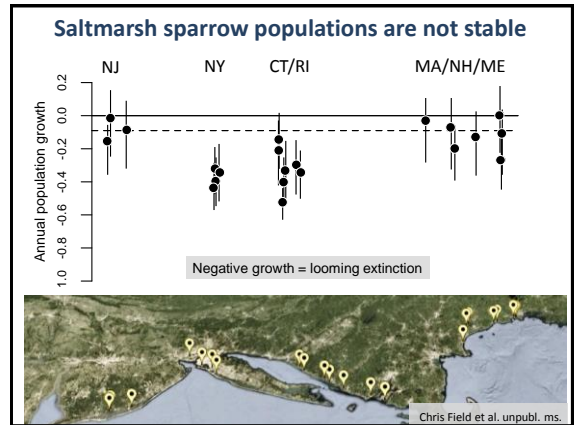
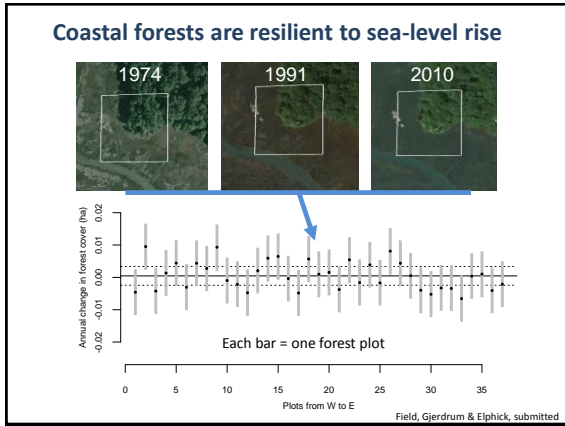
Sentinel monitoring

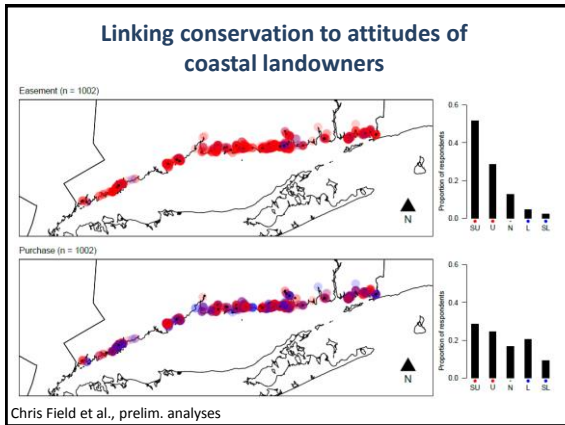
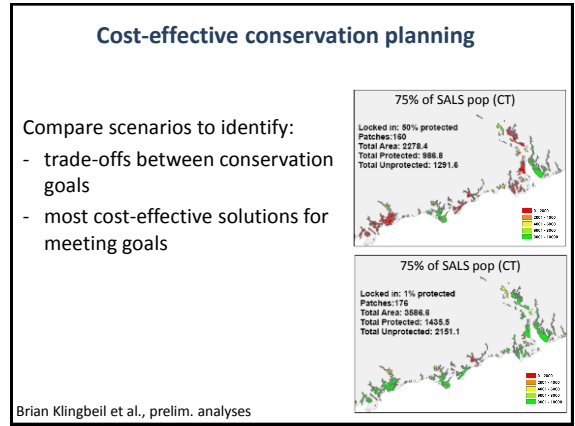
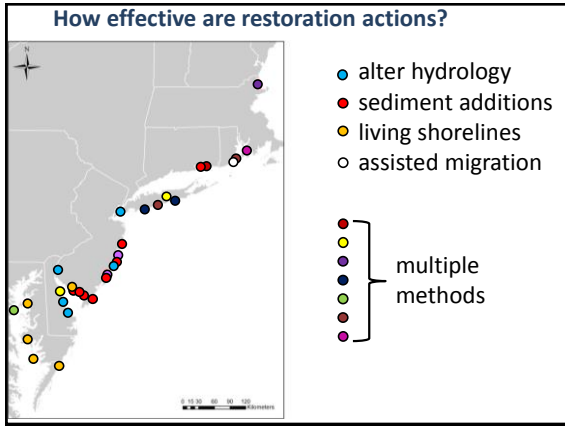
170 Baseline transects

- marsh vegetation change
- forest dieback
- marsh migration
- coastal bird populations

Elphick & Field. 2014. Wetland Science and Practice







MORE INFORMATION:
<http://www.tidalmarshbirds.org/>
<https://www.facebook.com/TidalMarshBirds>
 #SHARPBirds

CONTACT ME:
 chris.elphick@uconn.edu
 @ssts
<http://elphick.lab.uconn.edu>

Ecology and Evolutionary Biology
 Center for Conservation and Biodiversity
 University of Connecticut

University of Connecticut
Center for Conservation and Biodiversity